

At a Glance...

- Cam's Update.
- MESH- Pod Sealant
- Spray topping pastures
- UNIBOX OFFER - October Orders Only
- Insects and Spring
- FAECAL EGG TESTS – Correct Collection Procedure
- Store Specials—October
- TRIAL DAY—11th OCT 23
- SLUG BAIT—Deal

GORST RURAL

Lake Bolac
P 5350 2440 F 5350 2301
Derrinalum
P 5597 6668 F 5597 6713
Skipton
P 5340 2262 F 5340 2321
Tatyoan
P 5354 0585 F 5354 0571
Willaura
P 5354 1251 F 5354 1149

FIELD SERVICES TEAM

Cam Conboy
0418 655 137
Kelly Moore
0429 636 178
Ash Maconachie
0427 063 769
Marcus Smith
0447 035 970
Sonia Marquardt
0436 440 141
Alex Prince
0436 331 535
Grace Abela
0477 063 938
Robbie Neale
0428 681 300



At the time of writing our season hangs in the balance. After a dryish September and some warm days we are looking for some mild weather (no temperature extremes) and a couple of finishing rains. Whilst none of us can control the markets or the weather there is still a lot of good crops & pastures out there we just need to carefully manage coming down the home straight.

There is some good articles this month on livestock production, animal nutrition, managing weeds in late spring, insect management, our slug bait offer, specials and much more.

Retail Team Changes—As our business evolves we look at ways of improving. We have formed a separate retail team, now headed by Robbie Neale with store managers and customer service people to focus on customer needs. Robbie will continue in his role as Livestock Production Advisor also. Marcus Smith has taken on the role of Skipton Store Manager (as well as Agronomy) and Liam Christian as Lake Bolac Store Manager. Sam McDonald will continue as Operations Manager and oversee procure, logistics and all operations. Grace Lording has accepted the role of procurement admin and will be ordering, following up & tracking stock to ensure a smoother flow. Should you have any queries or issues please let us know.

Calendar Competition—Our calendar comp is nearing completion, thanks to all those who have sent in entries so far. We still need more so please keep sending through any photos or images that you think should grace everyone's kitchen walls. Get your photos in now for your chance to win a \$100 voucher. Submit to davina@gorstrural.com.au

Chep & Gorst Pallets—Gentle reminder as you clean up around the place any blue chep pallets and Gorst branded pallets incur a deposit. To get your money back (and us to get pallets ready for next year) please return to your local store or organise a pickup.

Feedback—We are constantly trying to improve our business and how we do things, your feedback is important to us. Please let any of our friendly store staff know if there is a particular product, service or solution you are looking for.

Invoices and Statements—We understand the seasons involved in our business, and that cashflow can be tight at this time of year however we have bills to pay too! If you are having trouble collating invoices or statements or difficulty in paying your account by the 25th of the month following purchase please talk to our admin team or store managers. We remind customers that all overdue accounts will incur ongoing account fees, give us a ring to discuss a plan if you are concerned.

October 2023

Conversely if there is a constant frustration, problems or issues we haven't resolved, let us know.

Trial Days- Cropping 11th October—I urge growers to come along to our field days and look at our trial sites, the team has worked hard to look at local issues, and showcasing solutions that could be implemented in your programs. Of particular note this year:

- ⇒ **Victrato** - game changing seed treatment for root disease. With dry spring finish, this has a definite fit in our cereal programs.
- ⇒ **Nitrogen polymers & biological N enhancers** - like them or not, we need to get better at gaining more efficiency from our N products, for better results, better economics and better environmental outcomes. Come & see what they actually do in the real world.
- ⇒ **Variety Trials** - including spring & winter crops, please make time to attend- RSVP to our friendly store staff.

Inputs Update—In supply chains, volatile continues to be the new normal. Drier regions of North & South America are playing havoc with input demand, along with a everchanging Chinese export market. Suppliers are very wary of current economic climate and El Nino predictions so everyone is treading carefully.

Seed—With the adoption of Optigly & Truflex much of the Roundup Ready crop will be heading down this path. We are starting to take canola seed orders now for 2024, have a look at variety trials and start thinking about your planning.

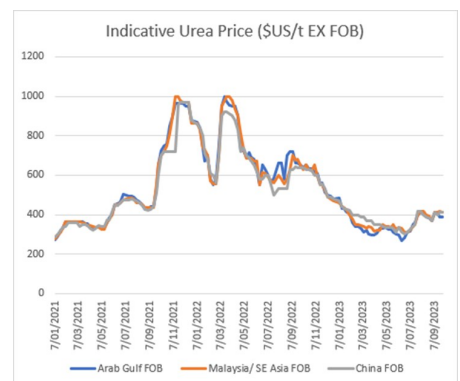
Ag Chem—Markets are slow with most pricing following a downward trend. Stocks are reducing, and supply whilst OK, is not over abundant. We are also trying to manage our own stock levels, please be patient as we swap products around and ensure we have what you need. Keep talking to us about your upcoming requirements.

Watch outs:

- ⇒ Glyphosate—market starting to come back down again after recent rises, expect in vicinity of 40-50cent adjustments. Need to start thinking about crop topping now!
- ⇒ Paraquat—market seems to be at a bottom, maybe wise to take a position.
- ⇒ Sharpen & Voraxor—product supply will be tight, consider requirements now.
- ⇒ Trifluralin—pricing still easing, monitor for now.
- ⇒ Slug Bait—see early offer, take now and pay in March 2024.

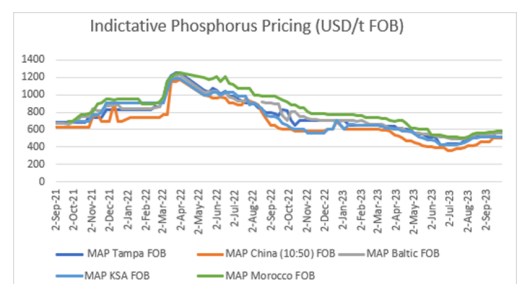
Urea

- ⇒ International market slow. Decrease in grain values & sluggish farm level demand.
- ⇒ Trading light and Chinese values eased. Slight easing in International pricing.
- ⇒ In other news—Strike Energy have pressed pause on Project Haber. This was a 1.4m tonne Urea project to be produced from gas fields in WA Mid West (Dongara) region. An increase in gas pricing and demand has seen more demand for gas, and put back developments on the Urea plant, possibly now towards the end of the decade.
- ⇒ For any immediate requirements in Urea, we do have stock in depots, and plenty at port.



MAP

- ⇒ Markets mixed this week, not much change in AP pricing.
- ⇒ US markets – rivers are closing for barges- but shortfalls have been made up with imports.
- ⇒ Increased production from OCP in Morocco continues to build.
- ⇒ Indian fertiliser support subsidy looks like it will stay, after previous reports.
- ⇒ Concerns over El Nino outcomes weighing heavily on P producers.
- ⇒ Continue to watch this space on fert movements and intelligence over next 8-12 weeks.



October 2023

MESH- Pod Sealant

Following on from great results last year, and challenges ahead for windrowing/croptopping we have obtained supplies of a Canola pod sealant that is the No 1 product used in the UK— **MESH**. This is a large improvement on the old PodCeal product and maybe an option for some.

It is applied at 1L/ha from the stage when the seeds begin to form (can roll them in your fingers so pretty much right at the start of colour change). The protection on the crop lasts for 12 weeks so plenty of protection time if harvest/windrowing is delayed. Information has suggested that for us we would be best to put it out with our Glyphosate desiccations and that is the timing that they are using in the UK (approx. 30% colour change). It doesn't need any wetter (just AMS and good quality glyphosate eg Crucial & DST with good wetter) but water rate is important so through a boom at 100L+ is the best. Initial commentary is that some people put it out through a plane @40L and they think that worked well but where people have been at 20L they think it struggles. Anecdotally it is thought that there is an increase of 150-500kg/ha from using it especially where the weather events that effect pod shatter occur and it's a fantastic option to add with Glyphosate.

It has been mentioned that if a grower is using it, at the end of each day they need to add fresh water to their tanks and run it through the lines to clean the Mesh out of the system. Once they have finished all of their applications with it, they just need to put some BS1000 in the tank and it will clean it out. It doesn't need AllClear or BoomKleen or anything just a non ionic surfactant.

For more information on Mesh and how it may suit your operation this season please talk to any of our friendly staff (limited stock only).



Spray topping pastures

Annual weeds in pastures can be a significant issue, spray topping can be a good tactic to help lower the annual grass seed bank. Spray topping results in less seed available to germinate and compete with pasture species. Making it a valuable tool in perennial pastures and as preparation for re-sowing.

What it is

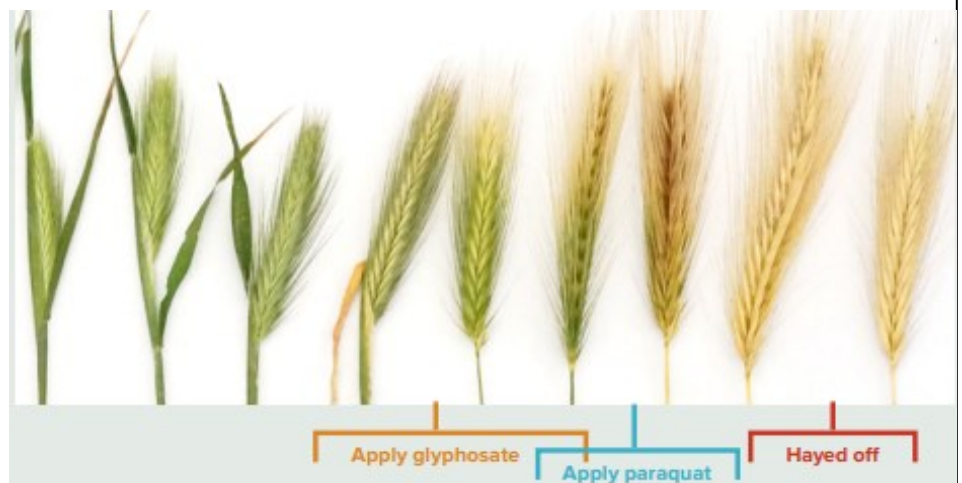
Spray topping uses a sublethal dose of herbicide (commonly Glyphosate or paraquat) to sterilise seed while it is being formed in the seed head. This disrupts the plant's ability to set viable seed, dramatically reducing seed carry over. The lowest rate possible of herbicide for desired control should be used, as the goal is to make the seed unviable without killing the plant or desired pasture species.

What will it control

Spray topping is useful in controlling annual grasses and some broadleaf weeds. The main weeds controlled are those with short seed life such as barley grass, brome grass, annual ryegrass, sliver grass and capeweed. Other weeds may be affected, however if the seed viability is long or seeds are fully formed the technique will be less effective.

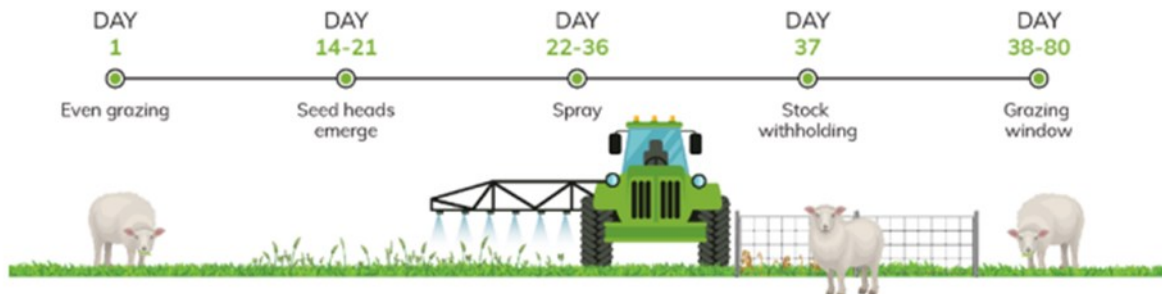
The process of spray topping

Successful spray topping relies on having an even seed head emergence. Heavy grazing then resting the paddock for two to three weeks before spraying allows heads to emerge evenly. The timing of the spray is critical and will vary with plant species and soil moisture. Ideal spray timing for glyphosate is at flowering for annual ryegrasses and capeweed and at or just before milky dough for barley, brome and sliver grasses. Beyond milky dough stage when seed heads begin to turn from green to light brown paraquat is the preferred herbicide. There is typically a two-week period where seeds are at ideal maturity for spraying.



October 2023

A consideration to spray topping is that perennial grass will be temporarily slowed, although the timing of the application is usually in late spring when pasture production is high, there will still be a reduction in feed. Clover in the pasture can also be reduced due to the effect on clover seed set. For this reason, it is recommended to not spray top pastures which include clovers in their first year, to maximise seed set and allow a clover seed bank to build.



Contact your local Gorst rural agronomist for any questions on spray topping your pastures this spring.

UNIBOX OFFER - October Orders Only

With the 2024 sowing season coming around before you know it, Gorst Rural have decided to do a Uni Box Offer for any farmers interested in purchasing a Uni Box. Gorst Rural have purchased 8 Uni Boxes in 2023 and trialled them on farm for this year's sowing season, with feedback being really positive from those who have used them. We have used the Medium sized boxes and the XL boxes. I would recommend both to anyone interested and wouldn't bother buying the Small or Large. We have also found that the Uni Boxes are very good for safety as they are very sturdy when picked up by a forklift/tractor, you also don't have to get underneath the box to open them like a Bulka Bag. The other great aspect about the Uni Box is that they are reusable unlike Bulka Bags so therefore they limit a lot of rubbish. We would also be more than happy for farmers to bring the Uni Boxes in to put their canola seed into or a pasture mix rather than using Bulka Bags like previous years.

- ⇒ ***The Medium Uni Box will roughly hold 300kg of straight ryegrass and about 500kg of canola seed.***
- ⇒ ***The XL Box will roughly hold 900kg of straight ryegrass and about 1200kg of canola seed.***

Pricing for a Medium Uni Box would be \$1850ex gst plus freight

Pricing for a XL Uni Box would be \$2250ex gst plus freight

If you would like to purchase one of these Unibox's please talk to Ryan, orders need to be in by the end of October to take advantage of this special pricing.

Medium - 680kg



X-Large - 1,360kg



Insects and Spring

With warm spring weather about and high numbers already of insects in northern Victoria - this could be the year we see high levels of Aphids in canola and grubs in beans/cereals. The first step is monitoring, inspecting & sweeping crops for insect flights (Trapview is no longer in operation). Once flights are detected—insect presence, size and thresholds become important on spraying thresholds. Knowing how late we can spray crops with insecticides is going to be important as crops are maturing very quickly this year.

Spraying options to consider this year:

October 2023

- ⇒ **Vantacor**—Gp 28- Registered in Pulses for helicoverpa. Rapid feeding cessation, long residual activity (up to 21 days), and IPM benefits- moderate impact on beneficials.
- ⇒ **Exirel**—Gp 28- for Diamond Back Moth in Canola & Forage Brassica, suppression on helicoverpa & aphids. Rapid feeding cessation, some residual activity, cross spectrum with protection against sucking & chewing insects, and IPM benefits—moderate impact on beneficials. Can be applied with dessicant if required.
- ⇒ **Transform**—Gp4C- for Aphids (inc green peach aphids) in Canola, Cereals and Forage Brassicas. Highly effective on aphids, with systemic & translaminar activity—with minimal impact on beneficial insects.
- ⇒ **Pirimor**—Gp1A, registered in Canola and Cereals. Rapid knockdown, through direct contact and via fumigant action (better over 20oC) of aphids and relatively good IPM wise. Not effective on all species of aphids.



We also have basic SPs for control Eg Alpha Scud, Trojan & Karate- but consider newer mentioned options.

Reminder on WHP for some common insecticides for use at the moment:

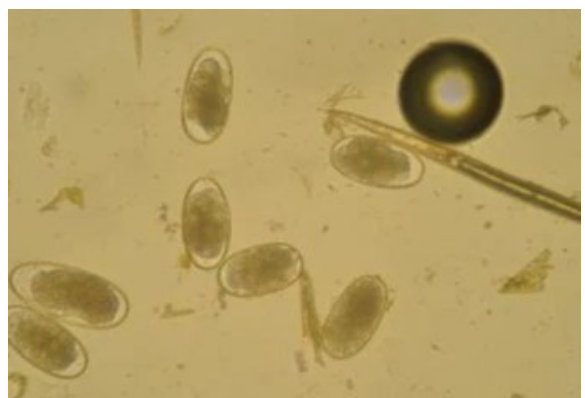
Product	HWHP	GWHP	ESI	EGI
Alpha Scud Elite	28 days (Beans)	35 days (Beans)	42 days	56 days
Trojan	7 days	7 days	42 days	56 days
SumiAlpha Flex	14 days	7 days	14 days	14 days
Vantacor	14 days	14 days	TBC	TBC
Transform	14 days	14 days	14 days	TBC

Extra ESI/EGI information from; [Australian plague locust: insecticide spraying guide | Agriculture and Food](#)

Talk to your Gorst Rural agronomist or store staff to discuss your best options.

FAECAL EGG TESTS – Correct Collection Procedure

Faecal egg testing is a common practice on every farm. It is used to help monitor worm levels in livestock and indicate whether there is a worm burden present. It is also a critical tool to help monitor pasture contamination to make grazing management decisions. Although it is a common practice, the collecting of the sample is often done incorrectly.



Here are some tips to ensure you get an accurate result;

1. Use a plastic tray – available from each Gorst Store
2. If you are collecting samples from the paddock, push the mob into the corner and hold them there for 15 minutes and then allow them to walk away. Or if you are testing individual sheep, you can collect straight from the rectum with the gloved finger.
3. Each sample should be around 10-15 grams (around a teaspoon) and a mob sample should have around 10 of these (fill the tray)
4. Collecting it into a tray eliminates the air it is exposed to which helps prevent the eggs from hatching.
5. Samples should be kept refrigerated until it is tested
6. Filling in the correct information - the following information should be supplied with the samples; Owner name and contact, mob identification, sheep age and class, pasture length and how long spent in the paddock and when they were last drenched and what with.

Following these steps helps reduce any inaccuracies from occurring.

Drop in any of your WEC tests to your local Gorst Store today!

Contact your local branch for pricing—whilst stock lasts:

PATON 1T FEEDER—LFSF24S—The Paton 1 Tonne Feeder is the ideal grain feeder designed perfectly for sheep. (2 available).

PATON 1.5T FEEDER—MF24 (Capacity - 2.4m3 = 1800kg Wheat—The 1.5 tonne sheep feeder is a good value model with the added fact you get an extra half tonne of feed over its little brother the 1 tonne unit)



NORTON 3 WAY ADJUSTABLE V SIDE DRAFT MODULE —Fully Sheeted Adjustable sides can be changed from Straight to V-Shaped as needed to control flow of sheep.

NORTON 3M PORTABLE SHEEP LOADING RAMP—Ideal to load sheep into trailer, ute, and/or truck. Use in conjunction with Portable Yards. Light and easy to move around.



FARMBOT WATER LEVEL MONITOR—Save on labour costs, fuel and time spent on manual water runs with Farmbot. Real-time text and/or email alerts when water level is low, high or rapidly falling.

Enables savings on labour and fuel costs. Improve decision making and conservation about your tank supply. 24/7 hypersensitive accurate level readings. Works anywhere – with satellite or cellular.



JACKY BIN 1730LT SIDE DISCHARGE—ideal for bagging feed, feeding out grain and pellets, filling seed drills and self-feeders, and dispensing into product blending systems. The steep slopes and large discharge opening assist with positive drainage and minimal retention of product in hopper.

JACKY LOU SLICK FEEDER 80L—Portable single-sided hopper, specifically designed to facilitate the storage and dispensing of loose mineral lick products and granular feed.



POLYMASTER 400Ltr COMPACT PACKAGE C/W 5.5H.P—Suitable for many applications, from tree watering to fire-fighting and much more. (Not pictured—2 available).



POLYMASTER 2000L DIESEL TANK—Designed so that you can use them in many situations, including on a trailer, on the back of a flat bed or fixed in one location on site, they provide operators with a cost effective diesel storage and dispensing solution. 1280W x 2280L x 1191H

DELMADE 150MM RIPPER/LAYER/REEL—The Delmade Ripper/Pipe Layer/Hose Reel is proudly Australian made and is fabricated from steel plate rather than tube meaning no kinks which can prevent any issues with the pipe rupturing and bursting as it ages and is hinged on the ripper tine for maneuverability. A working depth of 700mm. Its effective combination allows for laying 50mm (2") poly

pipe along with most fittings and joiners. The removable pipe layer face plate provides easy access to pipe and fittings during pipe laying operations and the pipe simply fits on the reel with no need to unroll the pipe saving you up to half the time usually taken to lay pipe using a traditional ripper. The ripper comes standard with a heavy-duty ripper point making it suitable for heavy and harsh conditions without bending or chipping the point.

"With a Delmade Ripper Pipe Layer you can do the job with LESS passes, LESS men, LESS hours and LESS physical strain = LESS money, so before you head out and do it the hard way take the time to run the numbers and let DELMADE help you lay your pipe in the safest, most time and cost-effective way".



LEADING PROVIDER OF AGRICULTURAL SOLUTIONS

October 2023



Victrato Trial: A new seed treatment that targets nematodes and key soil-borne fungal diseases.

Industry speaker from Incitec Pivot on nitrogen management and response rates.

A look into the effectiveness of biostimulants in enhancing and improving a conventional fertiliser program in wheat and beans.

Canola and Cereal variety trials comparing new winter and spring lines against our district benchmarks before commercial release.

TIME & PLACE

Buses available at 11 am from our Lake Bolac & Tatyoon store

Start time: 11.30 am along McCarthy Rd, off the Mortlake-Ararat Rd

Finish time: 4pm at our Lake Bolac store



WIN A WEBBER Q1000

Gorst is chockers!

**Have the product in
your shed ready to go!**

After recent seasons of interrupted slug bait supply- and the likelihood of still large slug numbers, we have taken early slug bait supplies from manufacturers. As fast as they produce it- we are grabbing it. However, our sheds are bursting at the seams- and we need to clear some room. If you would like to help us out- here's the deal.

- Order & take your Slug bait by November 30th, 2023. Free Delivery
- Extended payment terms not due until 25th March 2024.
- Backed by our price protection promise- if price moves down during that period (with reputable suppliers & brands), we adjust the price also. If it goes up, our price stands.

Products available

- Sabakem Slug Bait 15g/kg Metaldhyde 2.5mm Pellet 25kg & 500kg
- SnailEx 15g/kg Metaldhyde 2.5mm Pellet 500kg
- Metarex 10kg, 400kg
- Axcela 15kg, 500kg

Go in the Draw to Win a Webber Q1000

- Order before 30th November to get 5 tickets in the draw
- Order online and receive 10 tickets in the draw
- Drawn 1st December 2023

